







U. F. Santa Fe – Subsuelo (Gral. López 3306)

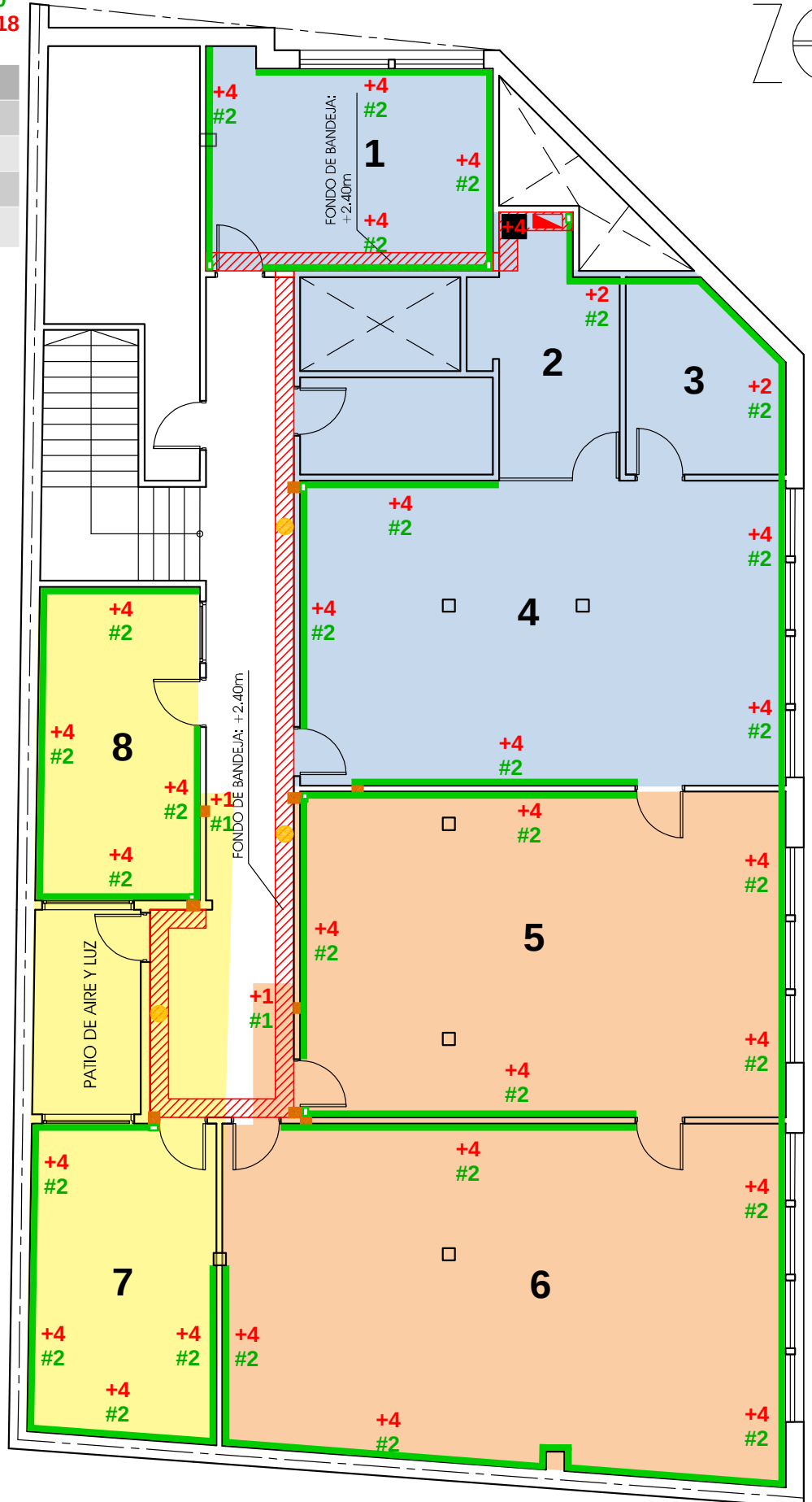
REFERENCIAS

-  tablero seccional, energía "estabilizada"
-  rack de 19" 15U
-  pase de muros

-  bandeja portacable 300x50mm
-  cablecanal tipo "zoloda" 100x50 con tabique
-  subida/bajada cablecanal 100x50 mm

Cantidad de bocas de red = 60
 + Cantidad de tomas de energía = 118

| Sector | Energía (+) | Red (#) |
|--------------|-------------|-----------|
| Amarillo | 44 | 22 |
| Azul | 33 | 17 |
| Naranja | 41 | 21 |
| Total | 118 | 60 |



(esc. 1:100)